



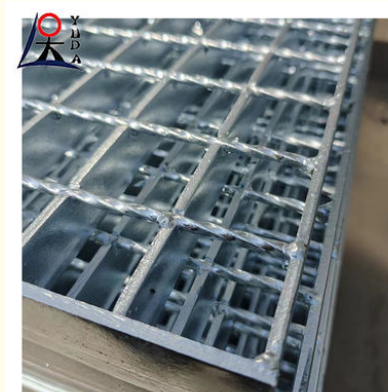
## Non Slip Steel Grille Sidewalk Platform Drainage Covers Are Competitively Priced

Our Product Introduction

for more products please visit us on [wire-metalmesh.com](http://wire-metalmesh.com)

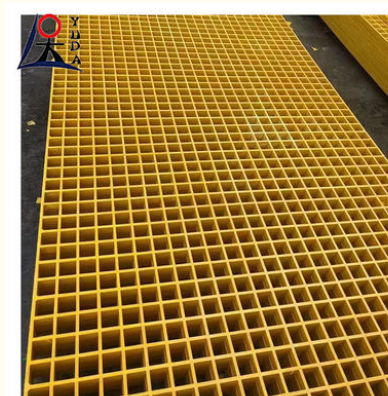
### Basic Information

- Place of Origin: China
- Brand Name: Yuda
- Certification: IOS
- Model Number: steel grating
- Minimum Order Quantity: 10pieces
- Price: \$10/m2
- Packaging Details: tray
- Delivery Time: 3-10days
- Payment Terms: T/T, L/C, D/A, D/P, Western Union, MoneyGram,
- Supply Ability: 5000pieces/day

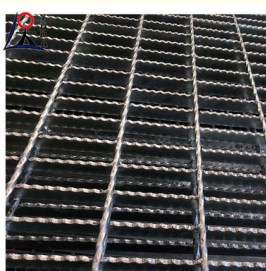


### Product Specification

- Product Name: Steel Grating
- Key Words: Non-slip Steel Grille
- Color: Silver
- Width: 0.5-2m
- Surface Treatment: Hot Dipped Galvanized
- Thickness: 1-5mm
- Installation Method: Welding
- Highlight: **Non Slip Steel Grille, Steel Grille Sidewalk, Non Slip perforated metal grilles**



### More Images

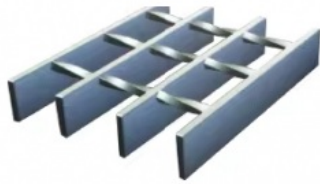


## Product Description

### Wholesale Non-Slip Steel Grille Sidewalk Platform Drainage Covers Are Competitively Priced

#### Brief Introduction of press locked steel gratings

With Press-Locked Grating the cross bars and bearing bars are notched and pressed together through a high pressure manufacturing process. The result is a bi-direction flush surface that assures a firm, rigid connection and makes it aesthetically appealing for architectural applications. It is available from stock in two bearing bars heights, in plain or corrosion-resistant galvanized steel, or aluminum. A variety of other bar heights, bar spacings and materials is available by special order.



Flat bar grating



Serrated grating



I-bar grating

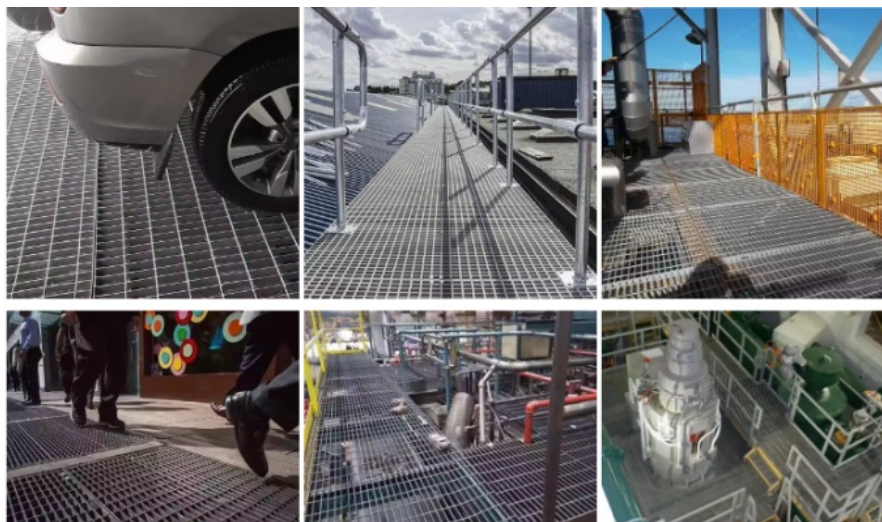


Serrated I-bar grating

#### Steel grid specifications

- \* Bearing bar size: 1" x 1/8" to 2-1/2" x 3/16" with 1/4" increments;
- \* Bearing bar spacing (center-to-center): 1-3/16", 15/16", 11/16" and 7/16";
- \* Cross bar spacing (center-to-center): 4" or 2".\* Bearing bar size: 1" x 1/8" to 2-1/2" x 3/16" with 1/4" increments;
- \* Bearing bar spacing (center-to-center): 1-3/16", 15/16", 11/16" and 7/16";
- \* Cross bar spacing (center-to-center): 4" or 2".

Common Mesh Spacing for Bearing Bars from 4 to 5 mm of Common Press-Locked Steel Grating								
Bearing Bar (mm)	Cross Bar (mm)							
21	16.65	22.2	33.3	44.4	49.95	66.6	99.9	
25	16.65	22.2	33.3	44.4	49.95	66.6	99.9	
33.3	16.65	22.2	33.3	44.4	49.95	66.6	99.9	
50	16.65	22.2	33.3	44.4	49.95	66.6	99.9	
66.6	16.65	22.2	33.3	44.4	49.95	66.6	99.9	
99.9	16.65	22.2	33.3	44.4	49.95	66.6	99.9	



#### Steel grid plate has the following characteristics:

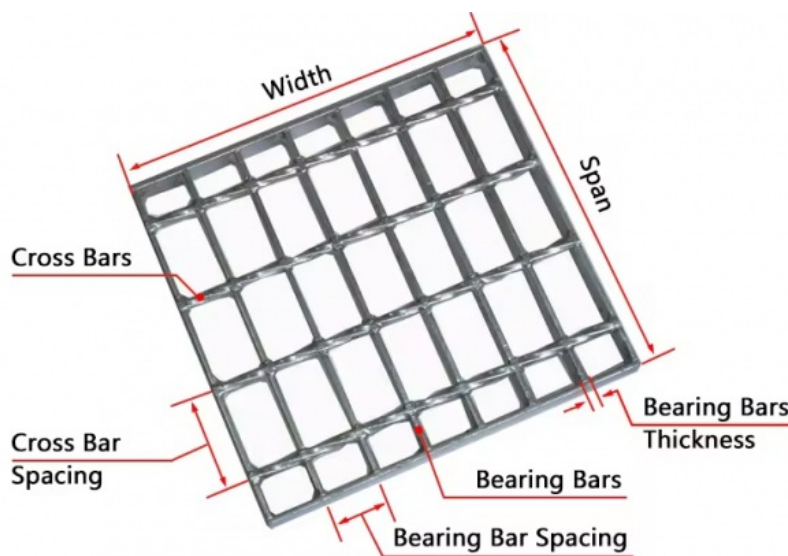
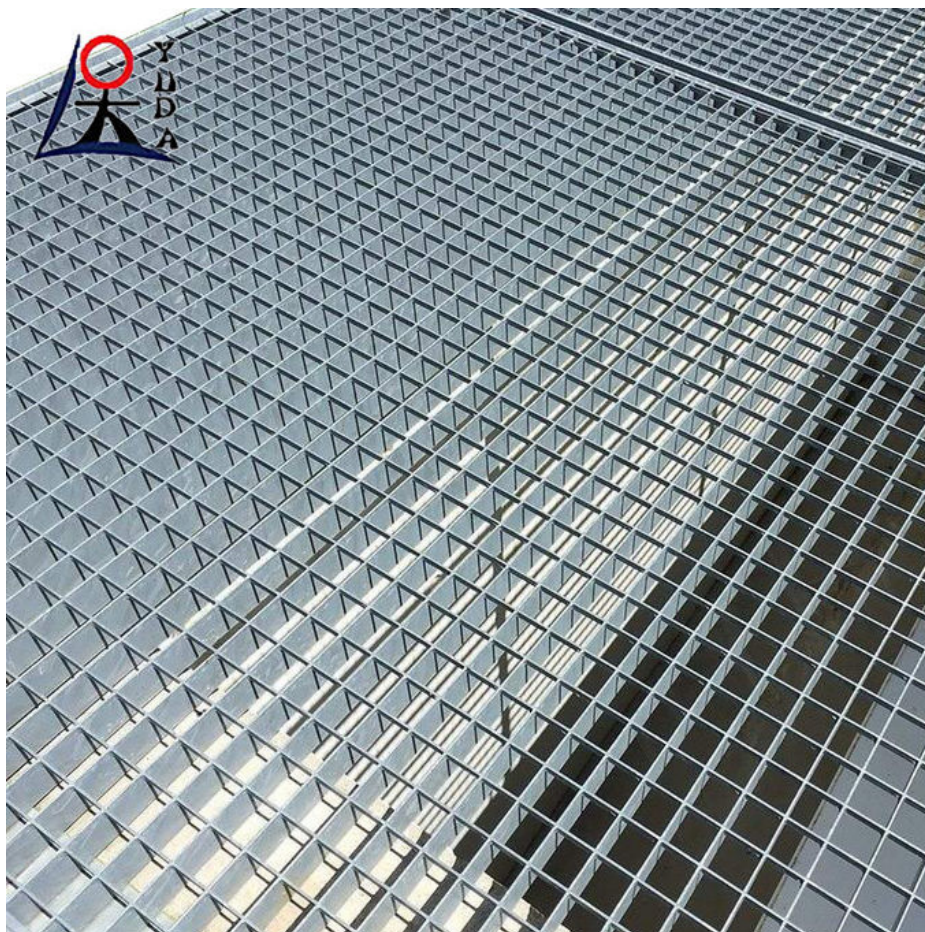
**Strength and durability:** Steel grid is made of high-strength steel with excellent compressive and tensile strength, able to withstand heavy loads and long-term use.



Anti-corrosion: steel grid plate is often galvanized or hot-dip galvanized to improve its corrosion resistance and extend its service life.

Variety: Steel grids can be customized according to specific needs and application scenarios, including different hole sizes, shapes and finishes.

Easy installation: The steel grid plate can be installed by welding, clamping or bolted, etc., with high installation flexibility.



Steel grating finds applications in various sectors, including industrial plants, manufacturing facilities, oil and gas refineries, power plants, wastewater treatment plants, transportation infrastructure (such as bridges and highways), commercial buildings, and public spaces.

It is worth noting that while steel grating is a common term, there are different types and configurations available, such as welded steel grating, press-locked grating, and heavy-duty grating. The selection of the appropriate type depends on factors such as load requirements, span, and the environment in which it will be installed.



**Anping Yuda Wire Mesh Co., Ltd.**



13785885555



sales@china-mesh-wire.com



wire-metalmesh.com

Xiwangzhuang Developing Zone, Anping, Hebei, China

