



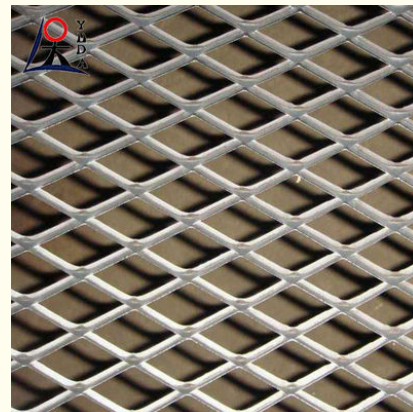
Hot Dipped Galvanized Carbon Steel Expanded Metal With Various Styles Metal Diamond Mesh

Our Product Introduction

for more products please visit us on wire-metalmesh.com

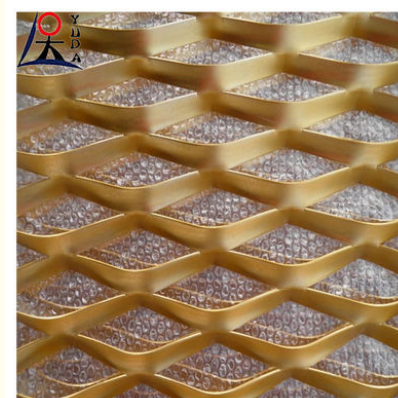
Basic Information

- Place of Origin: CHINA
- Brand Name: YUDA
- Model Number: Expanded metal mesh
- Minimum Order Quantity: 50 Meters
- Price: US \$2.50 - 5.60/ Square Meter
- Packaging Details: Customized according to buyer's requirements
- Delivery Time: 3-10 day
- Payment Terms: T/T, L/C, D/A, D/P, Western Union, MoneyGram
- Supply Ability: 200000 Meters/ day

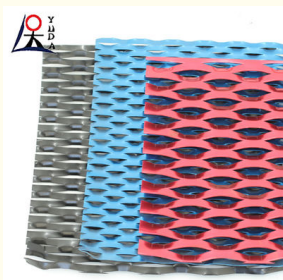


Product Specification

- Product Name: Expanded Metal Mesh
- Key Words: Hot Dipped Galvanized
- Material: Low Carbon Steel /stainless Steel / Aluminum/copper Etc.
- Hole Shape: Diamond Hole, Hexagonal, Etc,
- Thickness: 0.1 - 8mm Or Custom
- Length: 1-50m/roll , Customers' Requirement
- Width: 0.5-2m, Customers' Requirement
- Wire Diameter: Requirement
- Usage: Grating, Safety Mesh, protective Net
- Highlight: **4x8 Metal Diamond Mesh, Hot Dipped Carbon Steel Expanded Metal, carbon steel 4x8 expanded metal**



More Images



Product Description

Hot Dipped Galvanized Carbon Steel Expanded Metal With Various Styles

Typically, expanded metal mesh is used in a variety of applications such as filters, protective barriers, decorative or artwork. In these applications, expanded metal mesh can be customised into the desired shape and size by cutting, folding, bending etc.

Materials: Common expanded metal mesh materials include steel, aluminium, stainless steel and so on. The specific choice of material should take into account the application environment and requirements.

Aperture size: refers to the size of the mesh holes, usually in millimetres (mm). The size of the mesh can be determined by the required filtration, ventilation or protection requirements.

Plate Thickness: refers to the thickness of the metal mesh, usually in millimetres (mm).

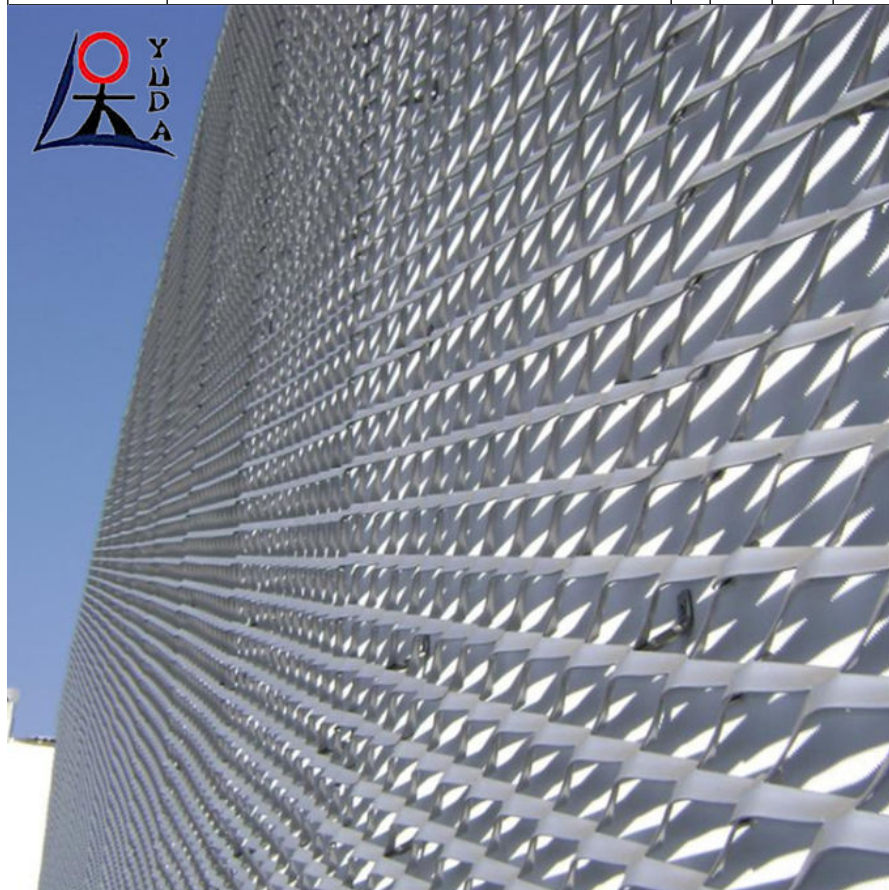
Mesh Size: refers to the overall size of the expanded metal mesh and can be determined based on the space requirements of the specific application.

Plate Width and Length: Expanded metal mesh is usually made in the form of a full sheet of metal, so plate width and length are also important specification parameters.

Hole Shape: Expanded metal mesh can be drilled, diamond holes, square holes, etc. The specific shape can be selected according to the application requirements.

Surface treatment: Expanded metal mesh can be surface treated, such as hot-dip galvanised, sprayed, etc., to provide additional corrosion resistance and aesthetics.

Common specification of Expanded Metal Walkway Grating					
Thickness	Strand width	SW	LWD		
(mm)	(mm)	D (m m)	(mm)	SW(m m)	LW(m m)
5	6.5	30	75	2000	600
5	6.5	30	80	2300	750
5	7.5	36	100	1800	900
5	7.5	36	136	3000	1200
5	8	40	100		
5	8	40	120		
5	11	55	100		
5	11	55	135		





Anping Yuda Wire Mesh Co., Ltd.

☎ 13785885555

✉ sales@china-mesh-wire.com

🌐 wire-metalmesh.com

