



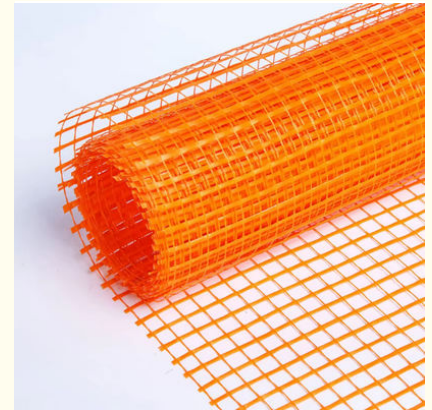
Fiber Glass Insulation 145gsm 45g 5x5 Eifs Stucco Reinforced Fiberglass Mesh For Roof

Our Product Introduction

for more products please visit us on wire-metalmesh.com

Basic Information

- Place of Origin: CHINA
- Brand Name: YUDA
- Certification: IOS
- Model Number: Glass fibre mesh
- Minimum Order Quantity: 100 Square Meter
- Price: US \$0.15 - 0.35/ Square Meter
- Packaging Details: Customized according to buyer's requirements
- Delivery Time: 3-10 day
- Payment Terms: L/C, D/A, D/P, T/T, Western Union, MoneyGram
- Supply Ability: 5000 rolls/ day



Product Specification

- Product Name: Fiberglass Mesh
- Key Words: Fiber Glass Insulation 145gsm 45g 5x5 Eifs Stucco Reinforced Roof
- Material: Fiberglass Yarn
- Size: Can Be Custom Made
- Colors: White, Yellow, blue
- Sample: Free
- Class: A B C
- Highlight: **5x5 Reinforced Fiberglass Mesh, Stucco reinforced fiberglass mesh, 145g Reinforced Fiberglass Mesh**



More Images



Product Description

Fiber Glass Insulation 145gsm 45g 5x5 Eifs Stucco Reinforced Roof

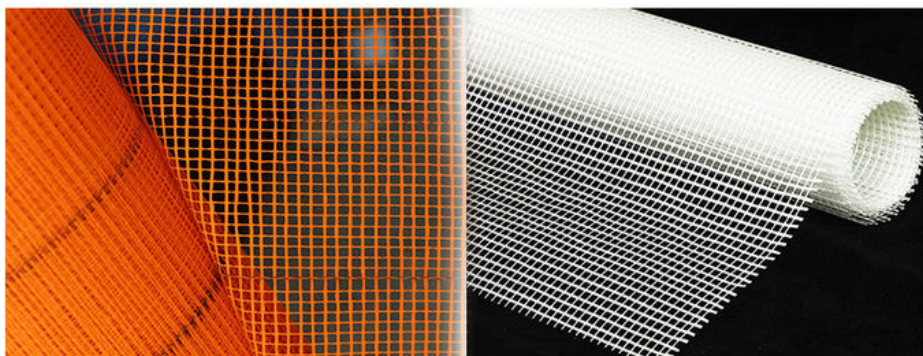
One piece of mesh solve all the troubles

FIBERGLASS MESH

Fiberglass Mesh Building Reinforcement Fiberglass Net Fiberglass Mesh

Fiberglass Mesh Is Mainly Alkali Resistant Fiberglass Fabric, It Made Of The C Or E Glass Fiber Yarn (main Ingredient Is ASilicate, Good Chemical Stability) Through A Special Weaving Technique, Then Coated By The Antalkali And Reinforcing Agent And Treated By High Temperature Heat Finishing. It's Ideal Engineering Material In Construction And Decoration.

After Surface Treatment, This Alkali-resistant Fiberglass Mesh Has Excellent Properties Including Water-resistance, Alkali-resistance, Flexibility, Softness And Resistance To Aging. It Is Widely Used In Reinforcing Walls, Natural Marble, Plaster Board, Artificial Stone Materials And Exterior Insulation Finishing System. It Is Also Widely Used For Renovating Building Surface.



Reinforced Fiberglass Wall Mesh Specification:

Item Number	Yarn(Tex)		Mesh(m)		Density Count/25mm		Tensile Strength × 20cm		Woven Structure	Content of resin%
	Warp	Weft	Warp	Weft	Warp	Weft	Warp	Weft		
45g 2.5x2.5	33x2	33	2.5	2.5	10	10	550	300	Leno	18
60g 2.5x2.5	40x2	40	2.5	2.5	10	10	550	650	Leno	18
70g 5x5	45x2	200	5	5	5	5	550	850	Leno	18
80g 5x5	67x2	200	5	5	5	5	700	850	Leno	18
90g 5x5	67x2	250	5	5	5	5	700	1050	Leno	18
110g 5x5	100x2	250	5	5	5	5	800	1050	Leno	18
125g 5x5	134x2	250	5	5	5	5	1200	1300	Leno	18
135g 5x5	134x2	300	5	5	5	5	1300	1400	Leno	18
145g 5x5	134x2	360	5	5	5	5	1200	1300	Leno	18
150g 4x5	134x2	300	4	5	6	5	1300	1300	Leno	18
160g 5x5	134x2	400	5	5	5	5	1450	1600	Leno	18
160g 4x4	134x2	300	4	4	6	6	1550	1650	Leno	18
165g 4x5	134x2	350	4	5	6	5	1300	1300	Leno	18

MESH TAPE

This tape is widely used in joining plaster plates, mending drywall cracks and piecing together and making up different kinds of plates. It goes on faster, adheres better, and requires no pasting or stapling. It won't tear, shrink, stretch or bubble, while it hides joints, cracks and holes permanently.

Feature

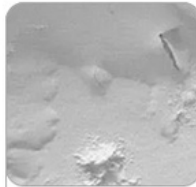
1. It is single coated with organic silicone adhesive and laminated with double sided anti-static protective film.
2. Using blue PET film as carrier.
3. It has the function of low adhesion and anti-static.



1. 75g / m² mesh fabric used in the reinforcement of thin slurry, to eliminate small cracks and scattered throughout the surface pressure.
2. 110g / m² mesh cloth is widely used in indoor and outdoor walls, prevent the various materials (such as brick, light wood, prefabricated structure) of treatment or caused by a variety of expansion coefficient of wall crack and break .
3. 145g/m² mesh fabric used in the wall and be mixed in various materials (such as brick, light wood, prefabricated structures), to prevent cracking and scatter the whole surface pressure, especially in the external wall insulation system (EIFS) .
4. 160g / m² mesh fabric used in insulator layer of reinforcement in the mortar, through shrinkage and temperature changes by providing a space to maintain movement between the layers, prevent crack and rupture due to shrinkage or temperature change.



/
Cracking of the
wall stucco layer



/
Dampness of the
wall stucco layer



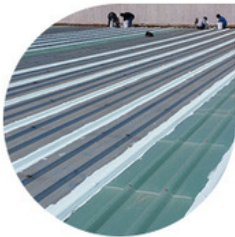
/
Wallpaper cracking

SHOPPING SUGGESTION



Fiberglass self adhesive mesh tapes

Used for small area crack
ceiling seam and trunking



80g-110g used for
construction site



125g-200g used
for home or company
renovation

280g-300g used for
high-grade residence
and villas



Anping Yuda Wire Mesh Co., Ltd.



13785885555



sales@china-mesh-wire.com



wire-metalmesh.com

Xiwangzhuang Developing Zone, Anping, Hebei, China