



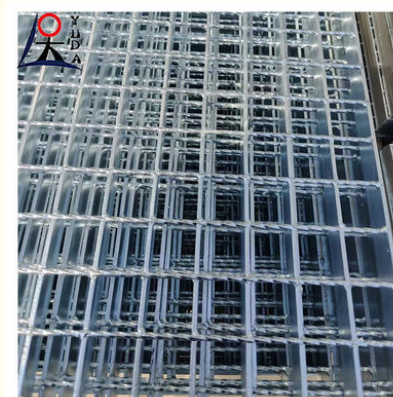
Heavy Duty Press-Locked Steel Grating PLG Metal Grates

Our Product Introduction

for more products please visit us on wire-metalmesh.com

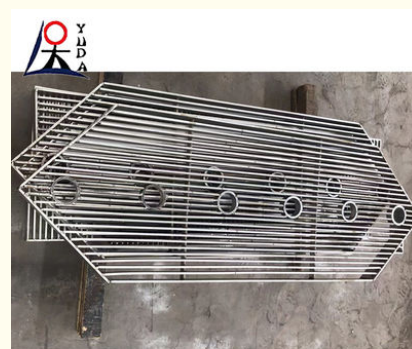
Basic Information

- Place of Origin: CHINA
- Brand Name: YUDA
- Model Number: Steel gratings
- Minimum Order Quantity: 50 Square Meter
- Price: US \$9.00 - 20.00/ Square Meter
- Packaging Details: Customized according to buyer's requirements
- Delivery Time: 3-10 day
- Payment Terms: L/C,D/A,D/P,T/T,Western Union,MoneyGram
- Supply Ability: 100000 Meters/ day



Product Specification

- Product Name: Steel Grating
- Key Words: Common Integral Louver Heavy Duty Press-Locked Steel Grating PLG Metal Grates
- Materials: Low Carbon Steel,Stainless Steel,aluminum Alloy,FRP Etc
- Processing Technology: Pressure Welding,pressure Locked
- Bearing Bar Type: Flat Bar, I Bar, Serrated Bar
- Width: 0.3-1.5m
- Grating Size: 1m X 5.8m
- Height: 25-40mm
- Highlight: **Integral Louver Press Locked Steel Grating ,
Common Press Locked Steel Grating ,
PLG press locked bar grating**



More Images



Product Description

Common Integral Louver Heavy Duty Press Locked Steel Grating PLG Metal Grates

Product Specifications

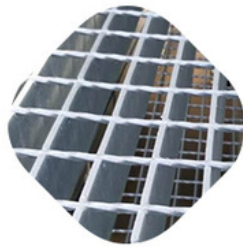
Attribute	Value
Product Name	Steel Grating
Materials	Low carbon steel, Stainless steel, Aluminum alloy, FRP etc
Processing Technology	Pressure welding, Pressure Locked
Bearing Bar Type	Flat bar, I bar, Serrated bar
Width	0.3-1.5m
Grating Size	1m x 5.8m
Height	25-40mm

Product Description

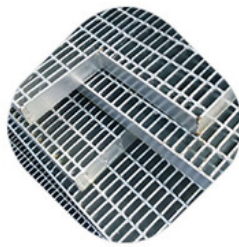
Common Specification of Steel Grating: ASTM A36, A1011, A569, Q235, S275JR, Stainless steel 304/316, Mild steel & Low carbon steel, etc. Special Material, High Zinc Coating and New Style can be Customized.

Technical Specifications

Category	Description
Bearing Bar Size	Flat steel: 25x3, 25x4, 25x4.5, 25x5, 30x3, 30x4, 30x4.5, 30x5, 32x5, 40x5, 50x5, 65x5, 75x6, 75x10---100x10mm, etc. I bar: 25x5x3, 30x5x3, 32x5x3, 40x5x3, etc. US Standard: 1"x3/16", 1 1/4"x3/16", 1 1/2"x3/16", 1"x1/4", 1 1/4"x1/4", 1 1/2"x1/4", 1"x1/8", 1 1/4"x1/8", 1 1/2"x1/8", etc.
Bearing Bar Pitch	General specifications: 12.5, 15, 20, 23.85, 25, 30, 30.16, 30.3, 32.5, 34.3, 35, 38.1, 40, 41.25, 60, 80mm, etc. US Standard: 19-w-4, 15-w-4, 11-w-4, 19-w-2, 15-w-2, etc.
Twisted Cross Bar Pitch	38.1, 50, 60, 76, 80, 100, 101.6, 120mm, 2" & 4", etc.
Material Grade	ASTM A36, A1011, A569, Q235, S275JR, SS304, SS400, Mild steel & Low carbon steel, etc.
Surface Treatment	Black, self-colour, hot dip galvanized, painted, spray coating
Grating Style	Plain / Smooth, Serrated / teeth, I bar, serrated I bar
Standards	China: YB/T 4001.1-2007 USA: ANSI/NAAMM(MBG531-88) UK: BS4592-1987 Australia: AS1657-1985 Germany: DIN24537-1-2006 Japan: JIS



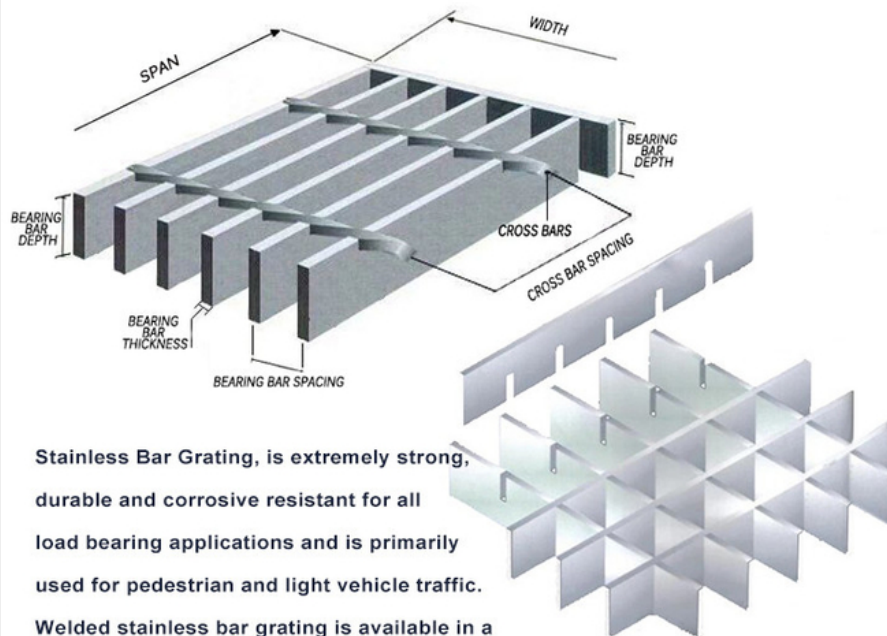
Galvanized Steel Grating



Special-Shaped Steel Grating



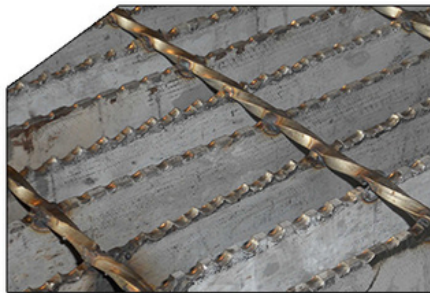
Fiberglass-Reinforced Plastics Steel Lattice Plate



Stainless Bar Grating, is extremely strong, durable and corrosive resistant for all load bearing applications and is primarily used for pedestrian and light vehicle traffic.

Welded stainless bar grating is available in a variety of bearing bar spacing and thicknesses depending on applications and load requirements.

Available in either smooth top or serrated for slip resistance.



01

FIRM GRID WELDING

Welded stainless bar grating is available in a variety of bearing bar spacing and thicknesses depending on applications and load requirements. Available in either smooth top or serrated for slip resistance.

02

SUPERIOR TO USE CARBON STEEL

Low high strength glass fiber reinforced plastic grille plate, its strength is ten times the rigid polyvinyl chloride (PVC), absolute strength much more than aluminum, to achieve the level of the ordinary steel.





Applications and Benefits

Anti-slip and drainage: The open hole design helps drain water and prevent slip accidents, ideal for platforms, steps, and work areas.

Bearing and support: Strong structure supports heavy equipment in industrial facilities, bridges, docks, and warehouses.

Ventilation and light transmission: Open design promotes air circulation and natural lighting for basements, garages, and computer rooms.

Security fence: Can be used to create secure boundaries and controlled access areas.

Packing Details

Label attached to each grating with panel number identification

Steel brackets used for package stabilization (4 pcs for panels under 1500mm×1000mm)

PVC tape bundling for secure transport

Thermoplastic tag attached to each package for easy identification

Plastic film wrapping for protection



Anping Yuda Wire Mesh Co., Ltd.



13785885555



sales@china-mesh-wire.com



wire-metalmesh.com

Xiwangzhuang Developing Zone, Anping, Hebei, China