



4mmx4mm Fiberglass Mesh For Composite Material Glass Fiber Mesh

Our Product Introduction

for more products please visit us on wire-metalmesh.com

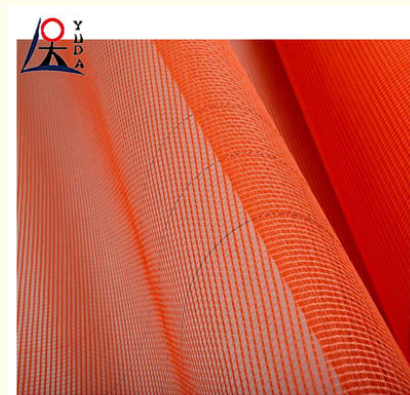
Basic Information

- Place of Origin: CHINA
- Brand Name: YUDA
- Certification: IOS
- Model Number: Glass fibre mesh
- Minimum Order Quantity: 100 Square Meter
- Price: US \$0.15 - 0.35/ Square Meter
- Packaging Details: Customized according to buyer's requirements
- Delivery Time: 3-10 day
- Payment Terms: L/C, D/A, D/P, T/T, Western Union, MoneyGram
- Supply Ability: 5000 rolls/ day

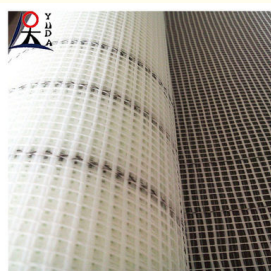


Product Specification

- Product Name: Fiberglass Mesh
- Key Words: 4mmx4mm Fiberglass Mesh Fiberglass For Composite Material Glass Fiber Mesh
- Material: Fiberglass Yarn
- Apertue: 4*4mm, 5*5mm Etc.
- Application: Wall Reinforcement, Roofing, Plastering, Flooring, Etc.
- Coating: PTFE
- Length: 50m, 100m, 200m, Etc.
- Processing Service: Cutting
- Highlight: **4mmx4mm Fiberglass Mesh, Composite Fiberglass Mesh**



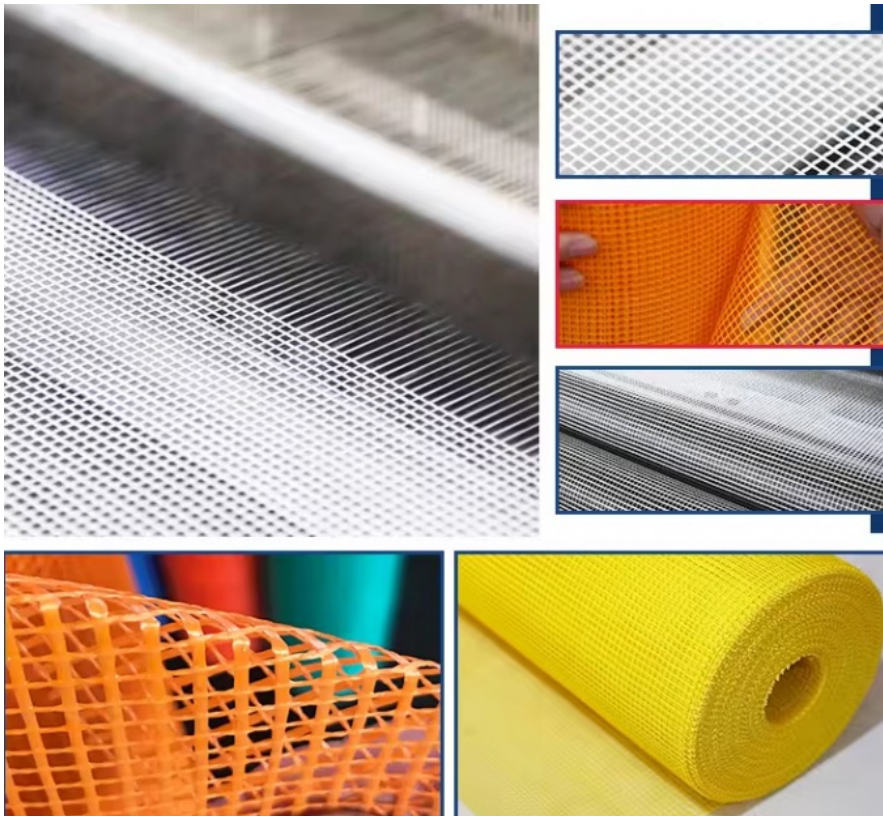
More Images



Product Description

4mmx4mm Fiberglass Mesh Fiberglass For Composite Material Glass Fiber Mesh

| | |
|--------------|---|
| Product name | Fiberglass mesh |
| Length | As Client's Request |
| Width | As Client's Request |
| Usage | wall crack repair,new and old wall seam,cement wall reinforcement |
| Feature | Insulated,Heat resistant,Corrosion resistant,High mechanical strength |
| Application | 1.Fiberglass mesh is used for wall reinforcement. 2.Fiberglass mesh is ideal material for out-side wall heat insulation. 3.Fiberglass mesh can be applied to bitumen as roof waterproof material, so as to strengthen the tensile strength and life time of bitumen. 4.For Reinforcement of marble, mosaic and stone, plaster. |



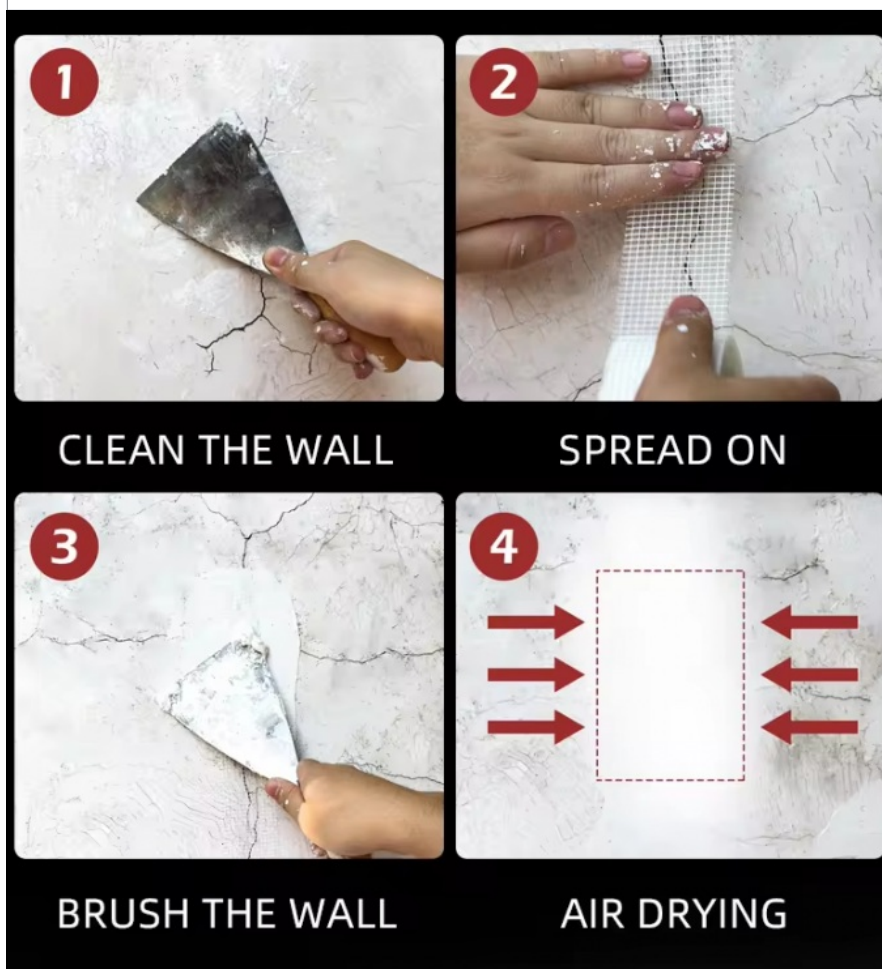
Reinforced Fiberglass Wall Mesh Specification:

Feature

1. It is single coated with organic silicone adhesive and laminated with double sided

| Item Number | Yarn(Tex) | | Mesh(m m) | | Density Count/25mm | | Tensile Strength × 20cm | | Woven Structure | Content of resin% |
|-------------|-----------|------|-----------|------|--------------------|------|-------------------------|------|-----------------|-------------------|
| | Warp | Weft | Warp | Weft | Warp | Weft | Warp | Weft | | |
| 45g 2.5x2.5 | 33x2 | 33 | 2.5 | 2.5 | 10 | 10 | 550 | 300 | Leno | 18 |
| 60g 2.5x2.5 | 40x2 | 40 | 2.5 | 2.5 | 10 | 10 | 550 | 650 | Leno | 18 |
| 70g 5x5 | 45x2 | 200 | 5 | 5 | 5 | 5 | 550 | 850 | Leno | 18 |
| 80g 5x5 | 67x2 | 200 | 5 | 5 | 5 | 5 | 700 | 850 | Leno | 18 |
| 90g 5x5 | 67x2 | 250 | 5 | 5 | 5 | 5 | 700 | 1050 | Leno | 18 |
| 110g 5x5 | 100x2 | 250 | 5 | 5 | 5 | 5 | 800 | 1050 | Leno | 18 |
| 125g 5x5 | 134x2 | 250 | 5 | 5 | 5 | 5 | 1200 | 1300 | Leno | 18 |
| 135g 5x5 | 134x2 | 300 | 5 | 5 | 5 | 5 | 1300 | 1400 | Leno | 18 |
| 145g 5x5 | 134x2 | 360 | 5 | 5 | 5 | 5 | 1200 | 1300 | Leno | 18 |
| 150g 4x5 | 134x2 | 300 | 4 | 5 | 6 | 5 | 1300 | 1300 | Leno | 18 |
| 160g 5x5 | 134x2 | 400 | 5 | 5 | 5 | 5 | 1450 | 1600 | Leno | 18 |
| 160g 4x4 | 134x2 | 300 | 4 | 4 | 6 | 6 | 1550 | 1650 | Leno | 18 |
| 165g 4x5 | 134x2 | 350 | 4 | 5 | 6 | 5 | 1300 | 1300 | Leno | 18 |

anti-static protective film.
 2. Using blue PET film as carrier.
 3. It has the function of low adhesion and anti-static.



1. 75g / m2 mesh fabric used in the reinforcement of thin slurry, to eliminate small cracks and scattered throughout the surface pressure.
2. 110g / m2 mesh cloth is widely used in indoor and outdoor walls, prevent the various materials (such as brick, light wood, prefabricated structure) of treatment or caused by a variety of expansion coefficient of wall crack and break .
3. 145g/m2 mesh fabric used in the wall and be mixed in various materials (such as brick, light wood, prefabricated structures), to prevent cracking and scatter the whole surface pressure, especially in the external wall insulation system (EIFS) .
4. 160g / m2 mesh fabric used in insulator layer of reinforcement in the mortar, through shrinkage and temperature changes by providing a space to maintain movement between the layers, prevent crack and rupture due to shrinkage or temperature change.



Anping Yuda Wire Mesh Co., Ltd.



13785885555



sales@china-mesh-wire.com



wire-metalmesh.com

Xiwangzhuang Developing Zone, Anping, Hebei, China