



Epoxy Resin Fiber Glass Mesh Mosaic Reinforcing Fiberglass Mesh Roll

Our Product Introduction

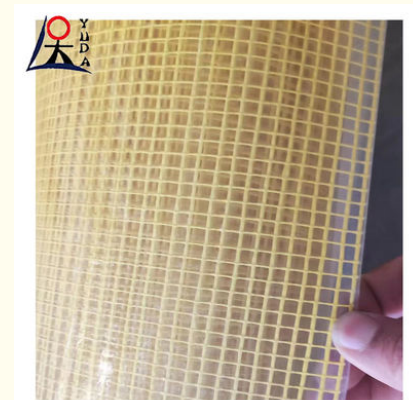
Basic Information

- Place of Origin: CHINA
- Brand Name: YUDA
- Certification: IOS
- Model Number: Glass fibre mesh
- Minimum Order Quantity: 100 Square Meter
- Price: Further discussion based on the purchase quantity
- Packaging Details: Customized according to buyer's requirements
- Delivery Time: 3-10 day
- Payment Terms: L/C,D/A,D/P,T/T,Western Union,MoneyGram
- Supply Ability: 5000 rolls/ day



Product Specification

- Product Name: Fiberglass Mesh
- Key Words: Reinforced Fiberglass Mesh Netting For Concrete Fiberglass Mesh Plaster Net
- Material: Fiberglass Yarn
- Size: Can Be Custom Made
- Colors: White, Yellow, blue
- Aperture: 4*4mm, 5*5mm Etc.
- Coating: Emulsion Coated, Urea Glue Coated
- Highlight: **Mosaic Reinforcing Fiberglass Mesh Roll, Reinforcing Fiberglass Mesh Roll, Epoxy Resin Fiberglass Mesh Roll**



for more products please visit us on wire-metalmesh.com

Product Description

Epoxy Resin Fiber Glass Mesh Mosaic Reinforcing Fiberglass Mesh Roll

Fiberglass Mesh Is Mainly Alkali Resistant Fiberglass Fabric, It Made Of The C Or E Glass Fiber Yarn (main Ingredient Is ASilicate, Good Chemical Stability) Through A Special Weaving Technique, Then Coated By The Antalkali And Reinforcing Agent And Treated By High Temperature Heat Finishing. It's Ideal Engineering Material In Construction And Decoration.

Main characteristics

1. Good chemical stability: Alkali-resistant, acid-resistant, waterproof,, cement erosion-resistant, and other chemicals' corrosion resistant; and strong resin bonding, soluble in styrene.
2. Good dimensional stability, stiffness, smoothness an difficult to shrink and deformation, good positioning property..
3. Good impact resistance and not easy to be teared.
4. Fire resistant, thermal insulation, sound insulation, insulations etc.

Product Application Description

- 1) Wall Reinforcing Material (such As Fiberglass Wall Mesh, Grc Wall Panel, Eps Internal Wall Insulation Board, Gypsum Board, Etc.
- 2) Enhance Cement Products (such As Roman Columns, Flue, Etc.).
- 3) Granite, Mosaic Net, Marble Back Net.
- 4) Waterproof Rolling Material Cloth And Asphalt Roofing Waterproof.
- 5) Strengthen The Skeleton Material Of Plastic And Rubber Products.
- 6) Fire Prevention Board.
- 7) Grinding Wheel Base Cloth.
- 8) Earthwork Grille For Road Surface.
- 9) Building And Seaming Belts And So On.

Reinforced Fiberglass Wall Mesh Specification:

Item Number	Yarn(Tex)		Mesh(mm)		Density Count/25mm		Tensile Strength × 20cm		Woven Structure	Content of resin%
	Warp	Weft	Warp	Weft	Warp	Weft	Warp	Weft		
45g2.5x2.5	33x2	33	2.5	2.5	10	10	550	300	Leno	18
60g2.5x2.5	40x2	40	2.5	2.5	10	10	550	650	Leno	18
70g 5x5	45x2	200	5	5	5	5	550	850	Leno	18
80g 5x5	67x2	200	5	5	5	5	700	850	Leno	18
90g 5x5	67x2	250	5	5	5	5	700	1050	Leno	18
110g 5x5	100x2	250	5	5	5	5	800	1050	Leno	18
125g 5x5	134x2	250	5	5	5	5	1200	1300	Leno	18
135g 5x5	134x2	300	5	5	5	5	1300	1400	Leno	18
145g 5x5	134x2	360	5	5	5	5	1200	1300	Leno	18
150g 4x5	134x2	300	4	5	6	5	1300	1300	Leno	18
160g 5x5	134x2	400	5	5	5	5	1450	1600	Leno	18
160g 4x4	134x2	300	4	4	6	6	1550	1650	Leno	18
165g 4x5	134x2	350	4	5	6	5	1300	1300	Leno	18

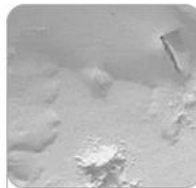


FIBERGLASS MESH

- Anti-cracking
- Heat preservation
- Anti-corrosion



/
Cracking of the
wall stucco layer



/
Dampness of the
wall stucco layer



/
Wallpaper cracking

SHOPPING SUGGESTION



Fiberglass self adhesive mesh tapes

Used for small area crack
ceiling seam and trunking



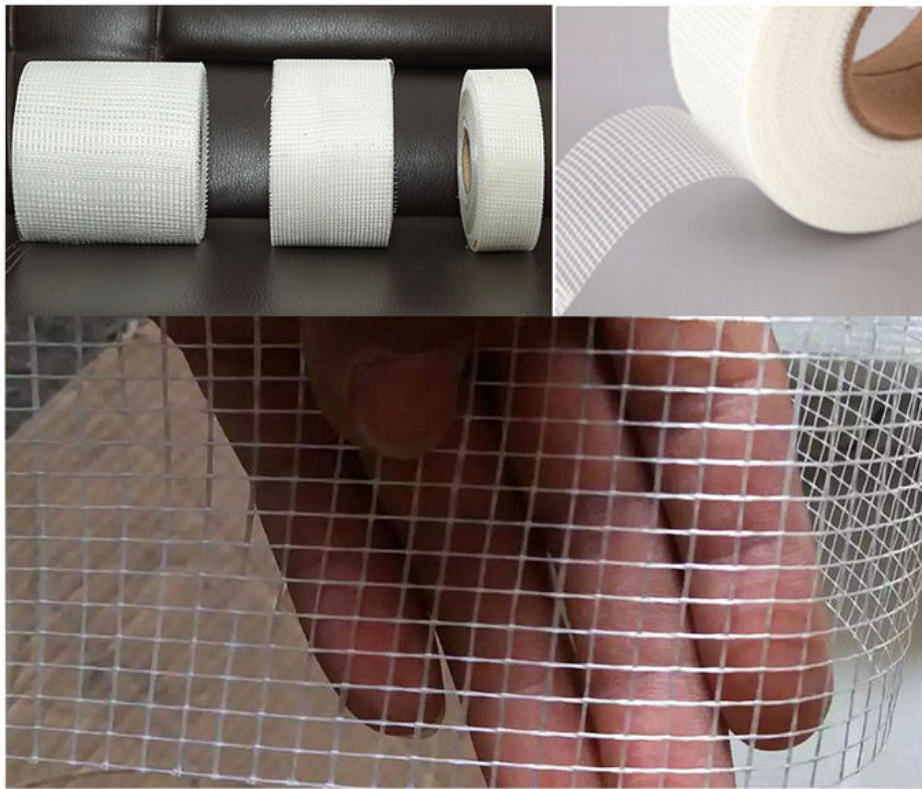
80g-110g used for
construction site



125g-200g used
for home or company
renovation

280g-300g used for
high-grade residence
and villas





Anping Yuda Wire Mesh Co., Ltd.



13785885555



sales@china-mesh-wire.com



wire-metalmesh.com

Xiwangzhuang Developing Zone, Anping, Hebei, China