



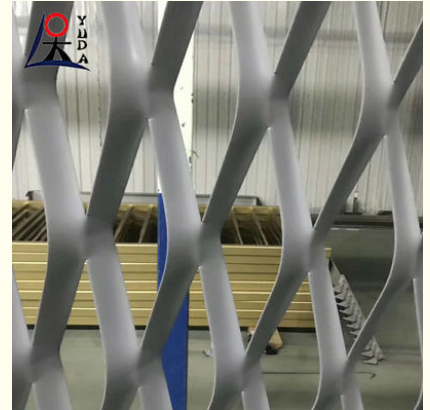
## 0.1 8mm Thickness Diamond Expanded Metal Mesh Stainless Steel Expanded Wire Mesh

### Our Product Introduction

for more products please visit us on [wire-metalmesh.com](http://wire-metalmesh.com)

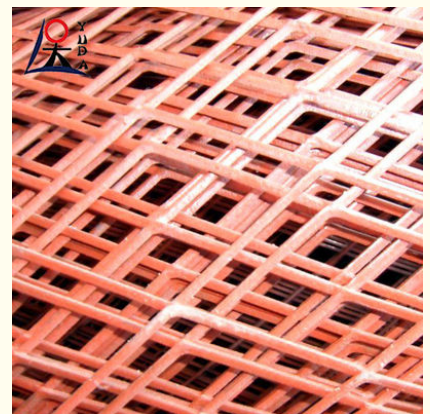
#### Basic Information

- Place of Origin: CHINA
- Brand Name: YUDA
- Model Number: Expanded metal mesh
- Minimum Order Quantity: 50 Meters
- Price: Further discussion based on quantity
- Packaging Details: Customized according to buyer's requirements
- Delivery Time: 3-10 day
- Payment Terms: T/T, L/C, D/A, D/P, Western Union, MoneyGram
- Supply Ability: 200000 Meters/ day



#### Product Specification

- Product Name: Expanded Metal Mesh
- Key Words: Highly Corrosive And Durable
- Material: Low Carbon Steel /stainless Steel / Aluminum/copper Etc.
- Hole Shape: Diamond Hole, Hexagonal, Etc,
- Thickness: 0.1 - 8mm Or Custom
- Length: 1-50m/roll , Customers' Requirement
- Width: 0.5-2m, Customers' Requirement
- Wire Diameter: Requirement
- Highlight: **Stainless Steel Expanded Metal Mesh,  
0.1 8mm Thickness Wire expanded mesh,  
0.1 8mm Thickness Expanded Metal Mesh**



## Product Description

### Diamond Expanded Metal Mesh Stainless Steel Expanded Wire Mesh

The small steel mesh is a steel mesh composed of two metal strips with right and left (or upper and lower) with curvature, which has light weight, reinforcing performance, uniform mesh connection, convenient construction, strong adhesion, shockproof and anti-cracking. Features.

#### Material

ordinary coil, galvanized sheet, aluminum sheet, copper plate, titanium plate, nickel plate..

#### Features:

Extremely versatile

Economical & durable

Easy to install

Easily cut to fit

Allows for free passage of air, light, heat, and sound.

Many material options, such as mild steel, stainless steel, galvanized and aluminum.

used in the production of filter, audio, child seat, decoration, basket, enamel and handicraft, filtration, packaging, battery, culture, machinery, electronic components protection in the pharmaceutical and paper industry

### FAQ

Q: What makes your products different from other company ' s?

A: We provide customized service, warranty service, with strictly quality control, perfect quantity and very competitive price.

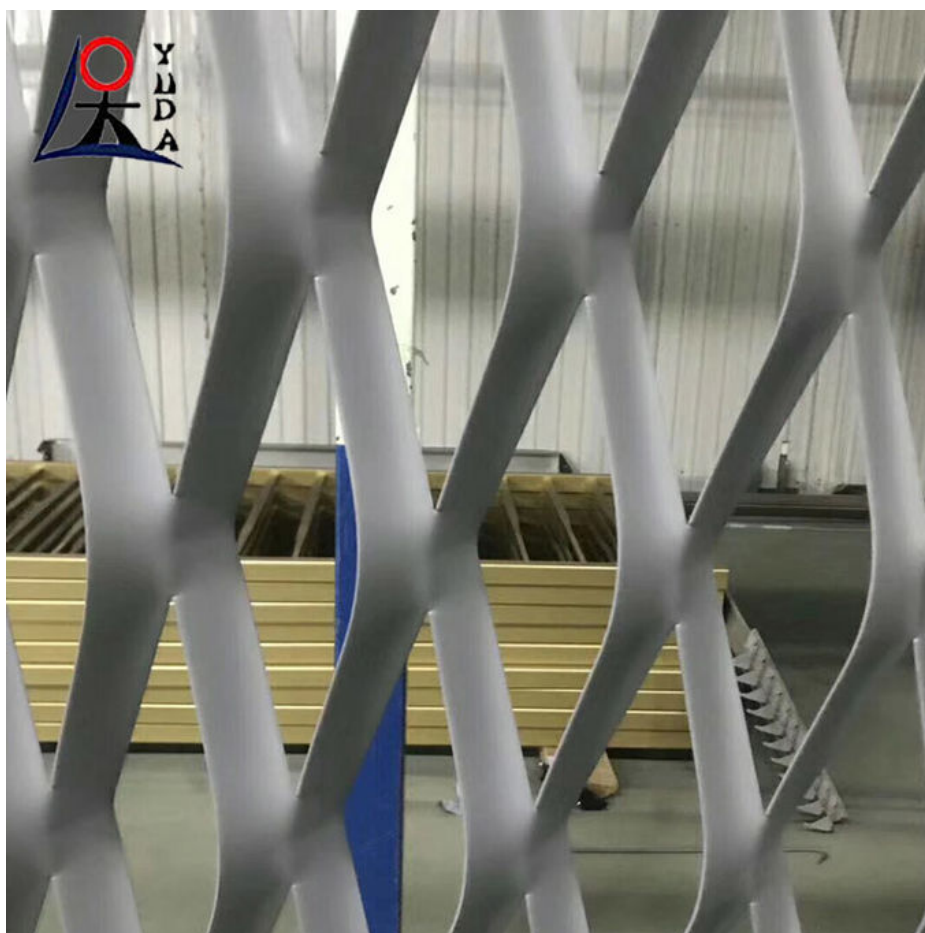
Q: What is your terms of payment?

A: TT, L/C at sight, you also can pay by West Union, Crash..

Q: How about the delivery time?

A: Usually within 20- 30 days, customized order may need longer time.

Thickness (mm)	SWD (mm)	LWD (mm)	Wire stems width (mm)	Width (m)	Length (m)	Weight (kg/m2)
0.5	2.5	4.5	0.5	0.5	1	1.8
0.5	10	25	0.5	0.6	2	0.73
0.6	10	25	1	0.6	2	1
0.8	10	25	1	0.6	2	1.25



Anping Yuda Wire Mesh Co., Ltd.

☎ 13785885555

✉ sales@china-mesh-wire.com

🌐 wire-metalmesh.com

